

BEYVÁK ACCOMMODATION – Křížkovského 3, Olomouc

Information and organizational instructions for guests:

Two single non-smoking rooms (No. 307 and No. 308) are available for short-term stays for the guests of the Faculty of Arts and other faculties of Palacky University. The rooms are connected by a bathroom (including a toilet), the door to the bathroom can be locked from each room and from the bathroom. There is a fridge, a kettle, a microwave and basic crockery in the room. There is a common room on the first floor. A fully equipped communal kitchen is available on the second floor. There is no breakfast service, however, there are many cafés and restaurants nearby.

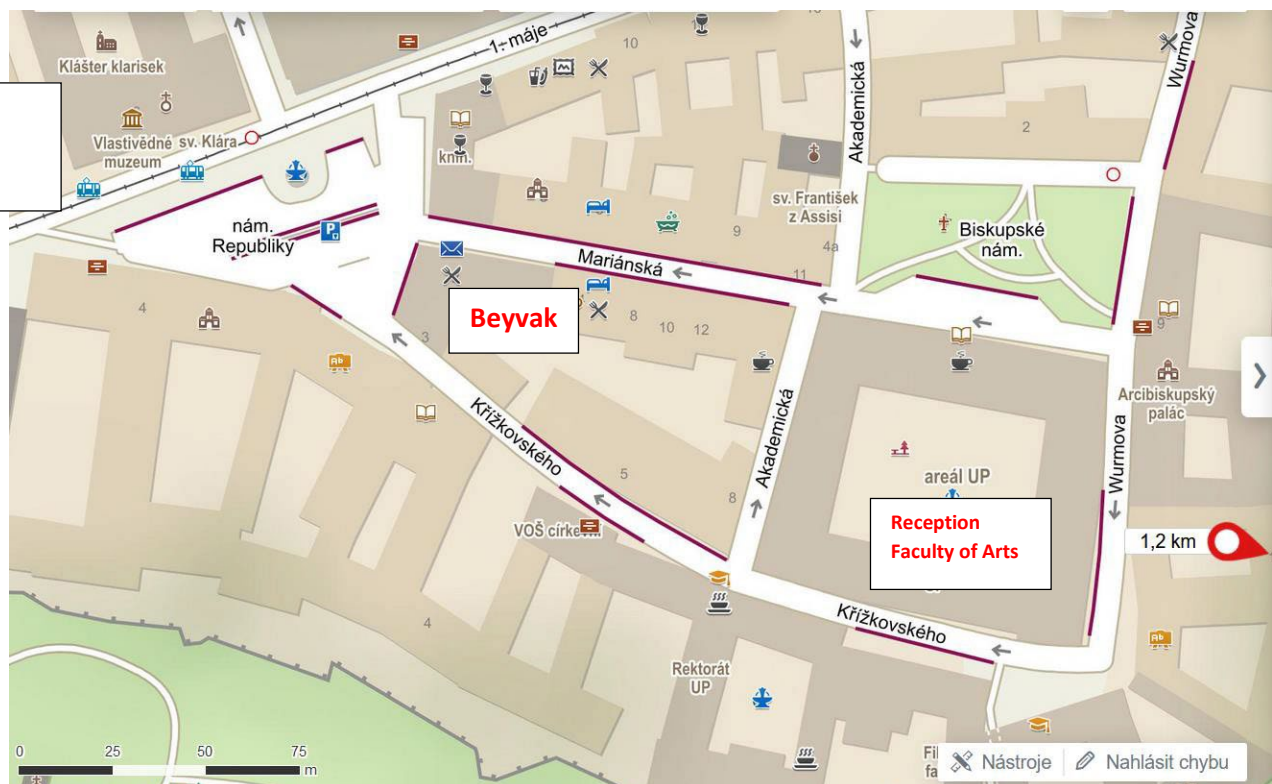
The rooms are located on the 3rd floor in a building with a lift. The entrance to the building is from Křížkovského Street through a passageway to the rear of the courtyard.

WIFI:

Network: Koleje Olomouc

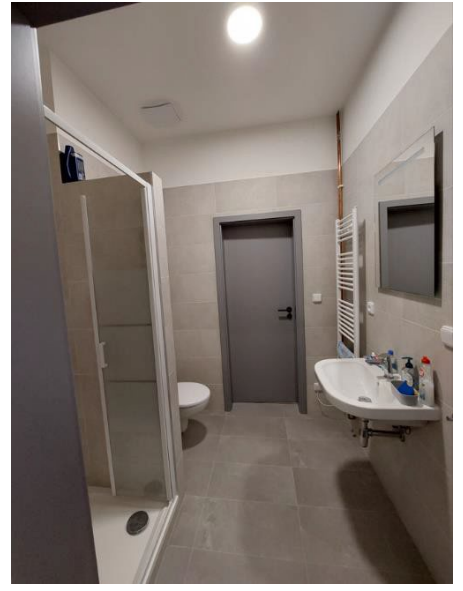
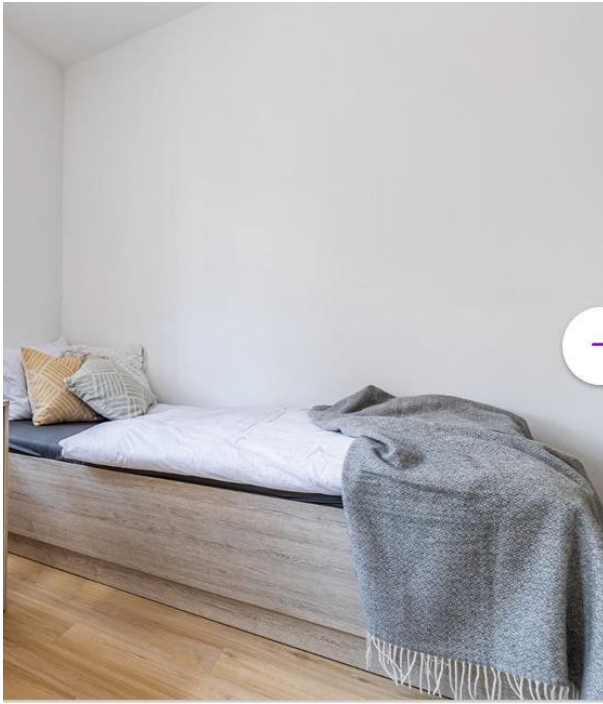
Password: Krizk0vskeho03 (there are zeroes in the password no letter O)

Map:



Your room is located on the third floor. Either use an elevator which is located to the right from the entrance, then make a left, pass the staircase and make another left. Your room is located on the right-hand side of the corridor. Should you like to use the staircase, go to the third floor, make a right and then a left. The room number is indicated on the door. Access is possible only with an access card which you will obtain from a receptionist at the Faculty of Arts (see for instructions below).

Your room:





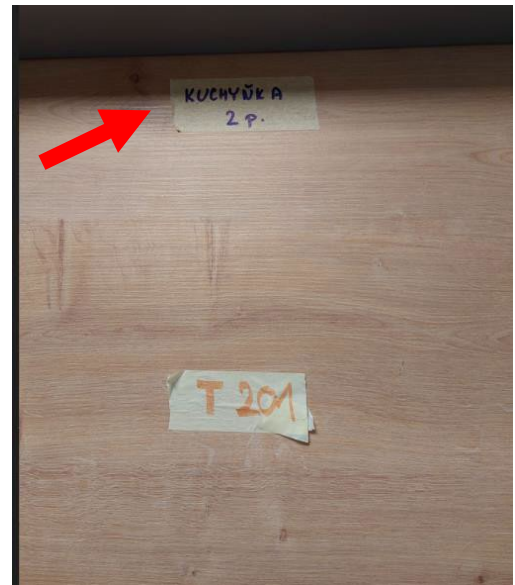
Washing machine and dryer on the **3rd floor** – can be use – small charge applies



Communal **kitchen** on the **2nd floor**, Door opposite the elevator, use your room card to access it



Communal kitchen on the 2nd floor, Door opposite the elevator, use your room card to access it



Price per night:

Price for 1 night incl. VAT 1 600CZK or 67 EUR

Price for 2-7 nights incl. VAT/1 night 1 100CZK or 46 EUR

Price for 8 -14 nights incl. VAT/1 night 800CZK or 33 EUR

Price for 15 and more nights incl. VAT/1night 400CZK or 17 EUR

Payment for the accommodation:

It is recommended to pay the accommodation by credit card when collecting the key (card) to enter the building and room. If you choose paying the accommodation by your employer, the employer must transfer the payment to the Faculty's bank account before your stay. You cannot pay by personal card when collecting the key (card) at the Křížkovského 10 concierge desk. The key card is picked up by the guest at the Křížkovského 10 concierge desk, which is open 24 hours a day, 7 days a week. The reception is located approximately 150 metres from the accommodation. If the entrance gate is locked, please ring the concierge button at the concierge desk. A deposit of CZK 500 will be collected for the card (by adding to your price for accommodation) and will be refunded when the card is returned to the Křížkovského 10 porter's lodging on the last day of accommodation. If you will return the room card during the working days (Monday till Friday) by 10 a.m. you will pick up the security deposit at the cash office of the Faculty of Arts – Mrs. Eva Šťastná (Křížkovského 10, entrance C, ground floor). The cash office is in front of the entrance C door. If you will departure and return the room card during the weekend, the security deposit 500 CZK/ 20 EUR will be refunded to your bank account.

Check in: after 2 p.m. (earlier check-in possible upon request and availability)

Check out: until 10 a.m. (late check-out possible upon request and availability)

Public transportation accessibility:

(timetables for the public transportation can be checked at <https://dpmo.cz/en/>)

1/ From the train station:

a/ **tram 2** from Hlavní nádraží stop (in front of the train station) to Náměstí Republiky stop (the tram will indicate direction Neředín Krematorium) – Náměstí Republiky is the 4th stop

b/ **tram 3** from Hlavní nádraží stop (in front of the train station) to Náměstí Republiky stop (the tram will indicate direction U Kapličky) – Náměstí Republiky is the 4th stop

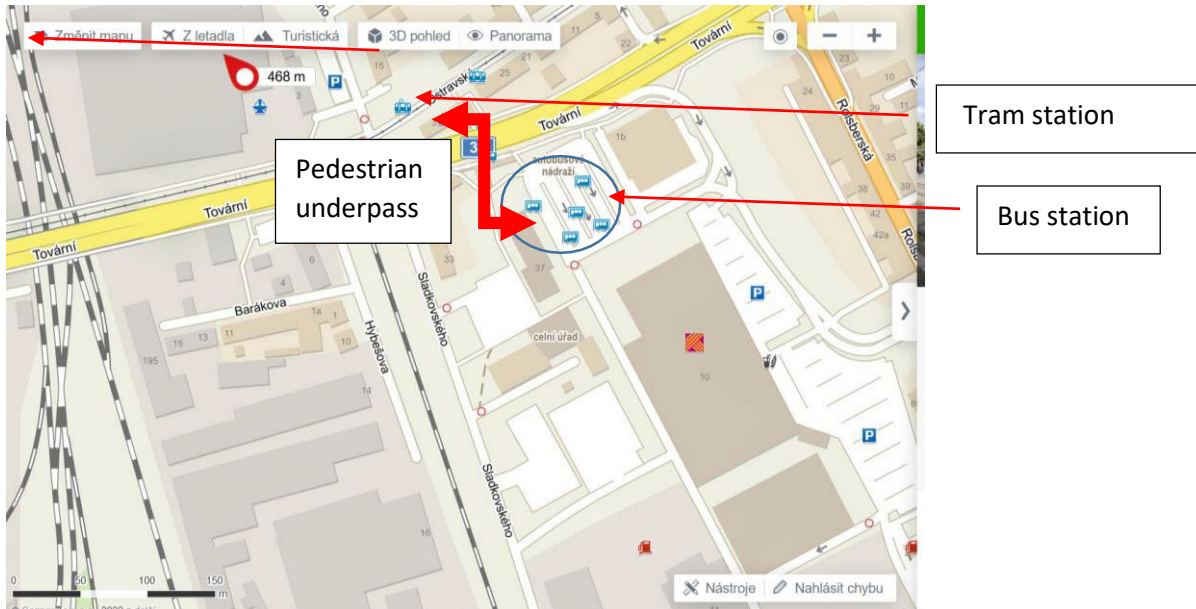
c/ **tram 4, 6** from Hlavní nádraží stop (in front of the train station) to Náměstí Republiky stop (the tram will indicate direction Nová ulice) – Náměstí Republiky is the 4th stop

d/ **Taxi** – the taxi stand is located to the right of the main station in front of a post office (e.g. Atlant taxi +420 800 113 030)



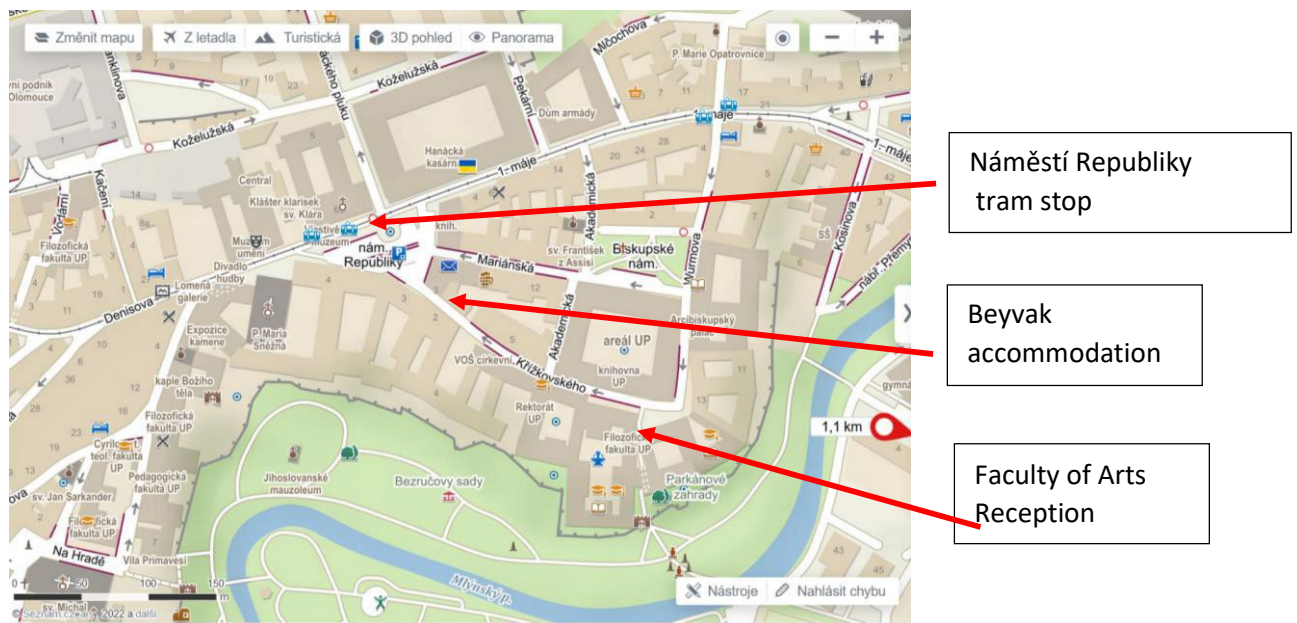
2/ from the bus station

Cross the main road via an underpass. Take tram 4 from Autobusové nádraží podchod stop to Náměstí Republiky stop (the tram will indicate direction Nová ulice).

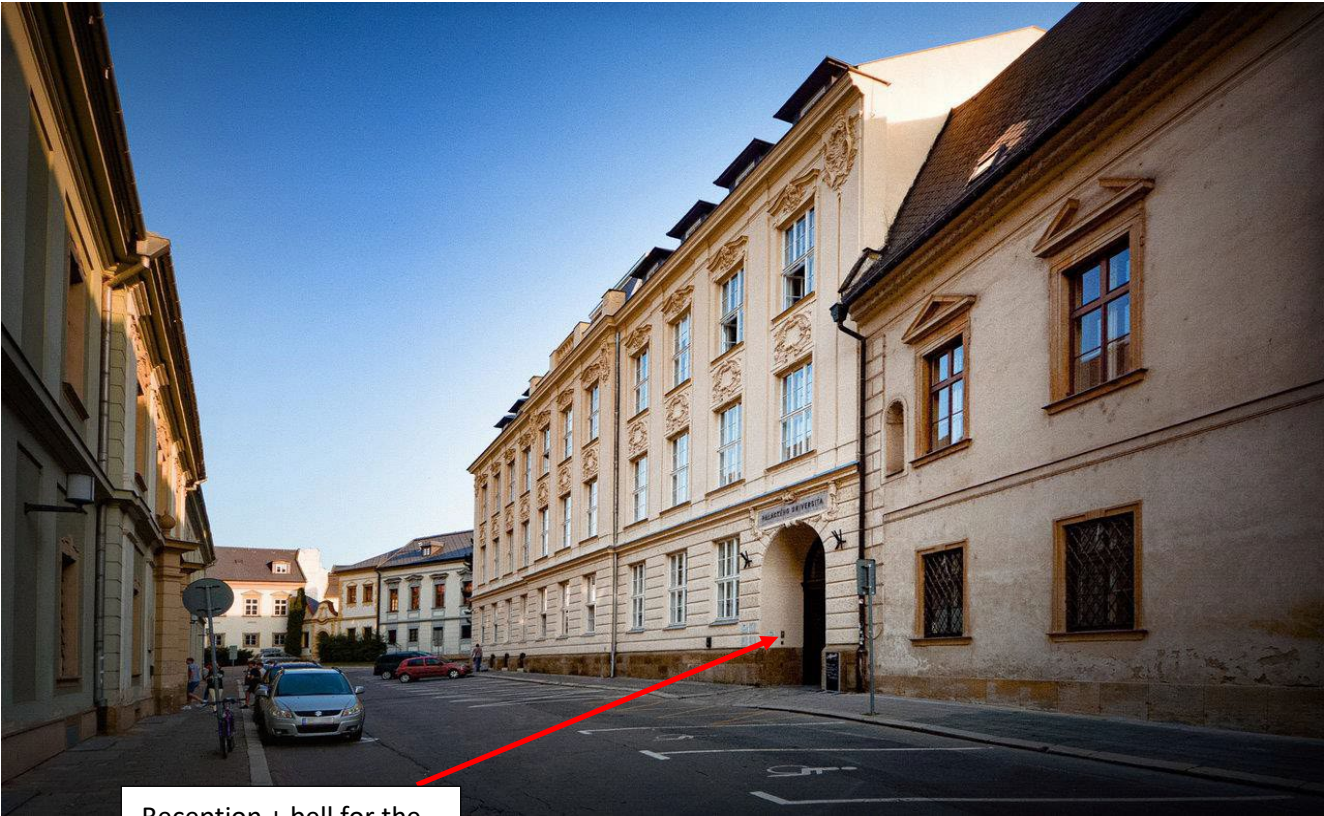


At Náměstí Republiky

Look for a fountain. Cross the small parking lot and follow the street to the right of the small square – it is Křížkovského street. Go for about 150 metres and you will arrive at the Gate of the Faculty of Arts (Filozofická fakulta). There you would be able to pick up your access card to your room at the reception which is open 24/7.



Reception of the Faculty of Arts



Reception + bell for the reception if needed

Access to your accommodation

Return towards the little square from which you came. On the right-hand side, there is the entrance to the Beyvak accommodation. Cross the little courtyard.





Important note:

Entrance gates to the Access door to the accommodation (see the photo above) are opened from 8:00 a.m. (on weekend from 9:00 a.m.) till 10:00 p.m.

Beyond these hours you can enter the accommodation through a door with the sign “Beyvák” (see photo above). You will need to use the key card to enter this door. However, beyond these hours you can not use this door for leaving the accommodation. Passage through this door is not technically possible during these hours.

If you need to leave the accommodation before 8:00 a.m. (on weekend before 9:00 a.m.) or after 10:00 p.m. you need to go from your room to the end of the corridor on the 3rd floor and use the emergency exit door. Then go downstairs to the ground floor of the building and you will leave the building through large wooden door to the street Mariánská (no. 845, the entrance is the same as to the pub Svatovaclavský pivovar). You can use this door for entrance the building as well. You will need the key card.

If you need your help to find the entrance, please call the staff of the concierge desk at the Křížkovského 10: +420 585 633 400, +420 731 675 304.

Alternative entrance to the accommodation from the Mariánská street no. 845:
You can use it before 8:00 a.m. (on weekends before 9:00 a.m.) and after 10:00 p.m.

